

D578UV Mobile Radio Firmware Update Instructions

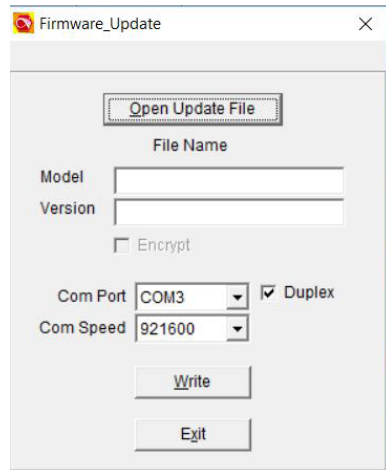
Firmware Update Sequence

It seems that some people have a problem with the button pressing sequence when trying to put the D578UV into firmware update mode. The following procedure works for me 100% of the time.

- 1- Have the radio powered on
- 2- Place a finger on both the MENU and EXIT buttons, but do not press
- 3- Press and hold the POWER button
- 4- The INSTANT that the display goes dark, press and hold the MENU and EXIT buttons
- 5- Release the POWER button. The red light above the power button should blink slowly
- 6- Release the MENU and EXIT buttons. The red light should continue to blink and the radio is ready to accept the firmware update.

**** Note: Once the radio is put in the FW update mode you must complete the FW Update Write to prevent the radio from staying in the Update Mode ****

- 1.) Power the radio "**ON**".
- 2.) Press and Hold both the **MENU** and **EXIT** keys, and power the radio "**OFF**" You may see a non-relevant message on the display, but keep holding the 3 buttons until you get the blinking red light over the power-off button.
- 3.) The red LED light should now blinking, and the radio has entered into firmware update mode.
- 4.) Use the USB cable to connect radio to your PC.
- 5.) Open the radio Computer Programming Software (CPS) and go to **TOOLS > Firmware Update**



- 6.) Select the **Open File** button and select the appropriate **D578UV.spi** file in the FW Update folder
- 7.) Check and Set the **Com Port** that is correct for your PC connected to the radio.
- 8.) Select the **Write** button to write the new FW to the radio.
- 9.) After the firmware update is finished, you must perform a Reset of the Radio (MCU Reboot).

D578UV Mobile Radio

Firmware Update Instructions

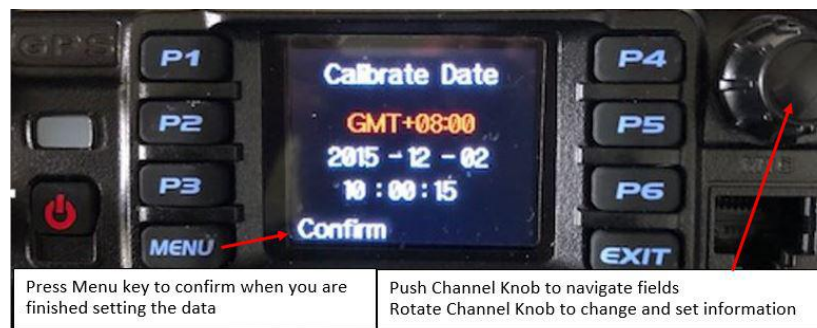
Radio Reset / MCU Reboot

1) To Reset the Radio: Press and Hold the two front panel keys **P2** and the **Channel Knob** (the one above the microphone connector) Hold these two keys while turning on the radio and it will reboot the radio into the Reset Mode.

2) The radio Reset Screen will appear and ask you to **Confirm** the reset by pressing the Menu key on the front panel. The reset itself will take a minute or more.



3) After completing the reset, the **Calibration Date** settings screen will open. You need to set the correct information by using the Channel Knob. Pushing the Channel Knob will navigate through the GMT, Date and Time fields, Rotating the Channel Knob will allow you to change the settings. When finished setting the data, use the **Menu** button to Confirm and the radio will reboot.



4) After successfully resetting the radio, your codeplug will be gone and the factory smaller version loaded. You should now load your saved Code Plug into the radio. Check the Com Port, and from the CPS write your codeplug into the radio. No special set-up is required to write a codeplug into the radio.